

RISKCHECK newsletter



Check Out Our New Digs!

Table of Contents



- ▶ **PAGE 1**
CHECK OUT
OUR NEW DIGS!



- ▶ **PAGE 2**
HOW MUCH IS
THAT FINE?



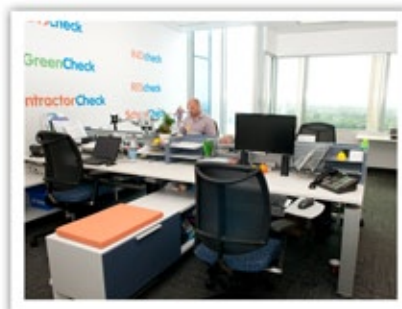
- ▶ **PAGE 3**
RISKCHECK'S
THIRD ANNUAL
SCHOOLS
SEMINAR



- ▶ **PAGE 4**
RISKCHECK
VOLUNTEERS
FOR HABITAT
FOR HUMANITY



- ▶ **PAGE 5**
OTHER
RISKCHECK
NEWS



After five and a half years on Yorkland Boulevard, RiskCheck moved into a beautiful new office on April 1st, 2011. We put a lot of effort into choosing a healthy and productive workspace for our staff. Our main priorities with the new office were to promote open-concept spaces and to carry out several green initiatives by integrating sustainability into our office design.

Contrary to our old office, which had a sea of high-walled cubicles, our new office boasts large, open-concept tables with individual work stations, more meeting rooms and several casual meeting spaces. There are, of course, still some quiet work areas for our staff to retreat when they need to buckle down. The open-concept space has increased transparency in the office and as a result, has promoted more innovation, collaboration and teamwork. The greater ease of communication and teamwork has also led to a more optimal workflow and greater productivity among RiskCheck staff. As well, our new office has tons of natural daylight and exterior views for all!

In addition to an open-concept office space, we worked hard to ensure that sustainability was integrated into our office design to reduce RiskCheck's environmental footprint. All of the furniture and carpet systems contain significant amounts of recycled materials and low VOC paint was chosen to ensure the maintenance of healthy indoor air quality. The interior structural elements, such as glass and wood framed doorways, were also re-used from old materials to reduce the demand for virgin materials and to reduce waste.



Karen O'Connor and Chris Kelson

All of these sustainable choices will aid RiskCheck in achieving our goal of LEED® (Leadership in Energy and Environmental Design) for Commercial Interiors (CI) Certification. LEED promotes a whole-building approach to sustainability by recognizing performance in five key areas of human and environmental health: sustainable site development, water efficiency, energy efficiency, materials selection and indoor environmental quality. LEED® CI is the green benchmark for the tenant improvement market and gives the power to make sustainable choices to tenants and designers, who do not always have control over whole building operations.

We aim to further our commitment to the environment and sustainable development by working with our building's Property Manager and contractors to certify our new office space in the next year. To aid in our goal, we are very excited to be tailoring our GreenCheck Program to LEED CI and LEED for Existing Buildings Certifications and we hope to announce the new product's details soon.

How Much is That Fine?

In March 2011, several severe fines were imposed by Ontario courts for health and safety violations contributing to the death of a worker. Among these fines was a \$350,000 fine levied against a retail grocer, Metro Ontario Inc. and a \$225,000 fine that was levied against Aecon Construction Group Inc. These are just a couple examples of hefty fines being placed on companies who have violated environmental, health and safety legislation.

Despite greater preventative measures and more stringent legislation, worker injuries or deaths and environmental mishaps seem to be regular occurrences. Accordingly, the government is increasingly charging higher fines to prohibit and deter people and companies from taking short cuts and disobeying government standards. In addition, it is also important to consider the potential for prison terms for serious violations, as listed in the Canadian Criminal code (Bill C-45) amendments from 2004 and the current provincial prison terms as set in the environmental, health and safety legislation.

Depending on the province that you live in, it is not uncommon to see six figure fines now being laid on corporations, and even fines in the tens of thousands of dollars for individuals. In Ontario alone, during the 2008/2009 year, over 14 million dollars in fines were levied for health and safety violation convictions. Maximum fine amounts vary substantially across the provinces, ranging from as little as \$200 in Quebec and P.E.I for a first offence by a natural person who is in violation of environmental legislation to up to 10 million dollars for subsequent offences for a corporation in Ontario (individuals can be fined up to 6 million dollars and face a maximum of 5 years less a day in prison). Health and Safety violations have similar ranges with a minimum fine of \$500 for a first offence by a person up to a maximum of \$1,237,461.35 (plus up to 12 months in prison) in British Columbia.

Courts have slowly but surely been applying increased fines (closing in on the maximum threshold amounts) as a way of conveying to individuals and companies that environmental protection and worker safety will not be taken lightly. Incidents, such as the scaffolding deaths in Ontario in 2009, demonstrate that serious accidents are still occurring and further highlight the impetus for governments and courts to increase the value of maximum fines in an effort to minimize the occurrence of these types of incidents. For a copy of the current fine amounts for each province please login to your RiskCheck account and go to the Documents Tab, the files can be found under the Legislation Guides.

UPCOMING MOL BLITZES

August 2011: Ladders, suspended stages, elevated work platforms – Construction Sector
October 2011: Personal Protective Equipment – Industrial Sector



RiskCheck's 3rd Annual Schools Seminar



From left to right: Richard Baldwin, Robert Cameron, Salima Sunderji, Karen O'Connor, Ian Johns, Eugene Zenger, Kathleen Wilson, Vince Alexander, Lynn Khazzam, Dan Mulock, Kirin Little, Greg Reynolds, Todd Billo and Allan Smith

On May 3rd, 2011 RiskCheck held its **3rd Annual School's Seminar** at the Badminton and Racquet Club in Toronto, Ontario. The purpose of the Seminar is to highlight Health and Safety issues specific to schools, such as gymnasium equipment safety, lab chemical safety, and playground inspections, and to give representatives from each school an opportunity to share best practices.

The Seminar was attended by representatives from several schools throughout Ontario. Topics at this year's event included asbestos awareness, pool testing and chemical storage requirements and a roundtable discussion reviewing a summary of 2010 assessment report findings.

RiskCheck was pleased to present **Appleby College** with the **2010 Compliancy Award** on their RiskCheck Interactive System and zero Action Report Re-Issues on their 2010 Annual Assessment Report. Robert Cameron, Facilities Manager at Appleby College, accepted the Award on the school's behalf.

ContractorCheck Attends 2011 SpringFest Tradeshow

In April RiskCheck attended the **2011 Springfest Tradeshow** for Property Managers, Owners, and Facility Managers to showcase **ContractorCheck** – The Accreditation Program for Contractors. The ContractorCheck team saw lots of energy at our booth, all day long. Many were interested in hearing more about our program and asked how they could enroll. If we missed you at the show, but you want to learn more about ContractorCheck, call us at **416-640-2444** and ask to speak to our Project Manager, Sharon Donnelly.



Sharon Donnelly and Karen O'Connor

RiskCheck Volunteers For

HABITAT FOR HUMANITY

For the fifth year, RiskCheck staff participated in the GWLRA Habitat for Humanity build on June 22nd, 2011. Sharon Donnelly, Clare Whitely, Robyn Wong, Charlie Giffin and Lynn Khazzam, along with several members from GWLRA and other volunteers got their construction hats out and assisted the main crew at the site for the day. The majority of the work carried out by the RiskCheck crew consisted of trimming and interior wall framing.

Currently, 29 townhomes are under construction at 4572 Kingston Road, located in Scarborough, Ontario. The homes will be built and certified under the GreenHouse® Certification, thus helping owners to reduce their energy and water consumption. Quality engineered recycled materials and careful waste management enables a GreenHouse® Certified Home to significantly reduce construction materials and construction and landfill waste. These factors will reduce the homes' greenhouse gas emissions.

Everyone involved greatly enjoyed the experience and took pleasure in getting a little sweaty for the day. The team was also happy to note that they did not observe any environmental, health and safety hazards on site although they were not there on inspection.

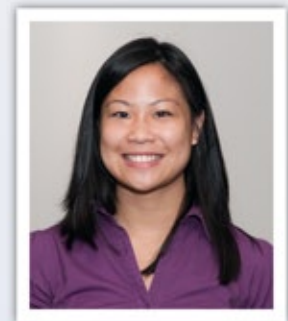


Introducing...

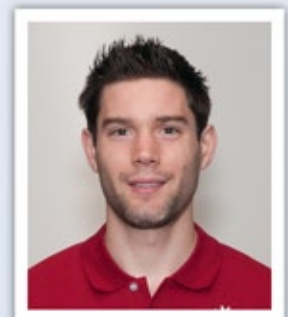
New RiskCheck Employees



Sharon Donnelly is the ContractorCheck Project Manager. She has 10 years experience in client management in the manufacturing field. She also completed a diploma in Home Furnishing Marketing & Design and is an Accredited Home Stager.



Robyn Wong joined the Health and Safety Technical Support Team. She recently graduated from the University of Western Ontario with a degree in Health Sciences.



Charlie Giffin hung up his skates after a two-year professional hockey career in Chomutov, Czech Republic and Freiburg, Germany; he now joins our Environmental team with a double-major BA in Economics and Environmental Studies, graduating from St. Lawrence University in upstate New York.

21st Annual CN Tower Climb for WWF - Canada



From left to right: Tony Pringle, Jen Harrison, James Power, Connor Power, Smitha Ramakrishna, Kathleen Wilson, Clare Whitely, Jordan Faust and Bart Chapman

On April 16th, 2011 a group of nine RiskCheck employees and friends, known as the **RiskCheck Skywalkers** assessed the risks and safely climbed the 1,776 steps of the CN Tower as part of their contribution supporting WWF Canada to combat climate change.

Thanks to the generous support of our sponsors, the team contributed just over **\$1,100.00** to the more than **\$1.1 million** that the event raised for this important cause over the weekend.

The entire team performed this tremendous task with impressive speed; many thanks to all of our supporters and sponsors for making this event such a success.

WANT TO KNOW MORE?

CHECK OUT OUR WEBSITE AT

WWW.RISKCHECKINC.COM FOR MORE

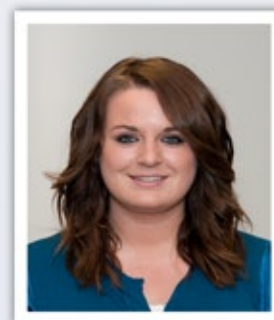
RISKCHECK AND INDUSTRY NEWS.

Introducing...

New RiskCheck Employees



Bart Chapman graduated from the University of Sydney in 2002. Bart has been working in Canada as an environmental consultant for the past 5 years. He recently joined RiskCheck's environmental team to perform Phase I and II ESA's, remedial programs and hazardous building materials assessments.



Clare Whitely completed an Honors Degree in Civil, Structural and Environmental Engineering as well as a Bachelor of Arts degree in Mathematics at Trinity College Dublin, Ireland in 2010. She is now part of the GreenCheck team.



Mika Solway is the GreenCheck Program Manager. She graduated from Civil Environmental Engineering at Queen's University in 2001 and has since worked as a Project Manager in Environmental Consulting, LEED for Homes and LEED for Existing Buildings.

